

# SFP Transceivers – 3,072 Gbps

## Description:

The 3.25 Gbps series are hot pluggable Small-Form-Factor (SFP) duplex, bidirectional and CWDM transceiver modules expressly designed for high speed communication applications that requiring rates of up to 3.25 Gbps. The transceivers are manufactured with LC receptacle that is compatible with the industry LC connector standard. All SFP transceivers have the digital diagnostic monitor feature.



	Unit	SX	LRM	LX	HX
Average output power (min / max)	dBm	-9 / -3	-9/ -3	-5 / 0	-2 / 3
Receiver sensitivity	dBm	-18	-18	-18	-20
Overload	dBm	0	-3	-1	-1
Maximum distance	km	550	2	20	40
Fiber type	-	MMF	MMF	SMF	SMF
Optical link budget	dBm	9	9	13	18
Wavelength / laser type	nm	850 / VCSEL	1310 / FP	1310 / DFB	1310/DFB 1550/DFB

Table 1: Basic technical specifications according to distance.

## Temperature:

OPTOKON is always trying to satisfy as much market demand as possible and with this in mind, almost all OPTOKON SFP transceivers are manufactured in the commercial (D), extended (E) and industrial (I) temperature ranges to provide you all possibilities you need for your application.

Code	Temperature
D	0 °C to + 70 °C
E	-10°C to + 80 °C
I	-40°C to + 85 °C

Table 2: Temperature specifications.

## Safety and regulatory compliance

Electrostatic discharge (ESD)	IEC/EN 61000-4-2
Electromagnetic Interference (EMI)	FCC Part 15 Class B EN 55022 Class B (CISPR 22A)
Laser Eye Safety	Class 1 laser product
Component Recognition	IEC/EN 60950, UL
ROHS	2002/95/EC
EMC	EN 61000-3

## Digital diagnostics:

All OPTOKON SFP transceivers are assembled with digital diagnostic feature as a standard.

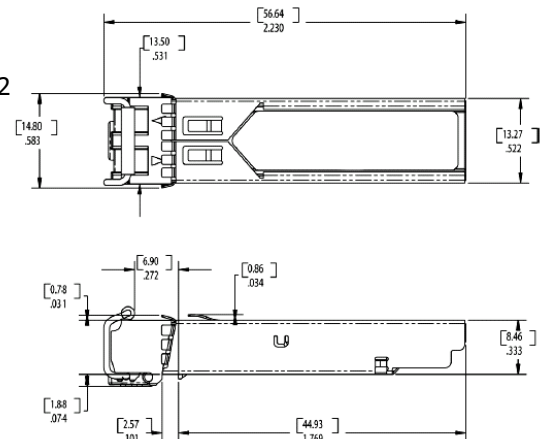
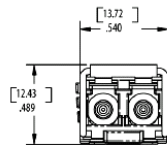


Figure 1: Transceiver dimensions schema.



## Ordering codes for 3.25 Gbps SFP transceivers:

### Standard series:

Part number:	Speed [Gbps]	Distance dd [-]	Wavelength [nm]	Temperature [-]	Fiber type [-]	Connector [-]
M125-V85-LP-SX-D-XX	3.25	0,550	850	D, E, I	MMF	LC
M125-F31-LP-LRM-D-XX	3.25	1,500	1310	D, E, I	MMF	LC
S125-F31-LP-LX-D-XX	3.25	20	1310	D, E, I	SMF	LC
S125-D55-LP-HX-D-XX	3.25	40	1550	D, E, I	SMF	LC

dd code [-]	Distance [km]
SX	0.550
LRM	1,5
LX	20
HX	40

Table 3: Distance code.

### Temperature code examples:

To order SFP with extended or industrial temperature, please replace the "D" mark with temperature mark in ordering number.

Code	Description
S125-D55-LP-HX-E-XX	Standard series, 1550nm, 40km, -10°C to +70°C operational temperature
S125-D55-LP-HX-I-XX	Standard series, 1550nm, 40km, -40°C to +80°C operational temperature