

# ESCON adapters

## Description:

The ESCON adapters are available for both singlemode and multimode performances. The ESCON compatible series includes duplex to ST and duplex to duplex couplings. It is possible to exactly specify your demands concerning choice of standard Flange Mount and Flange Mount with Panel Clips.



## Features:

- Choice of Standard Flange Mount and Flange Mount with Panel Clips
- IBM ESCON Compatible
- Optional Panel Clips eliminate the need for screws
- Accommodates 1.77 mm maximum panel thickness
- Multimode and singlemode

## Application:

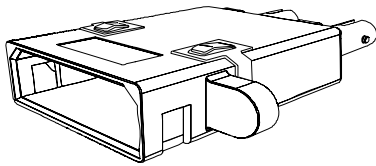
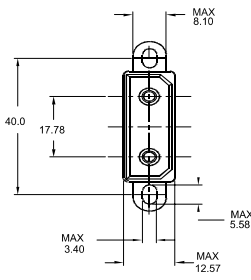
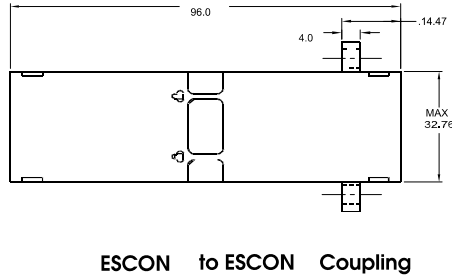
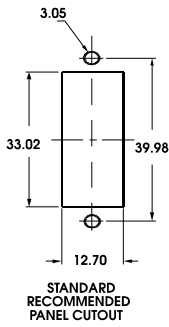
- IBM ESCON data network

## Ordering code:

A - ESCON - XX - XX

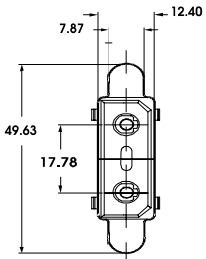
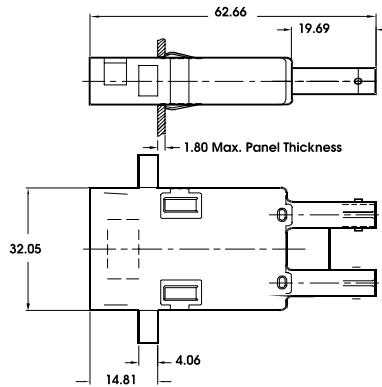
<b>Sleeve</b> 01 zirconia 02 phosphor bronze 03 polymer
<b>Flange Mounting</b> 01 flange mount 02 flange or snap mount

**Dimensions:**



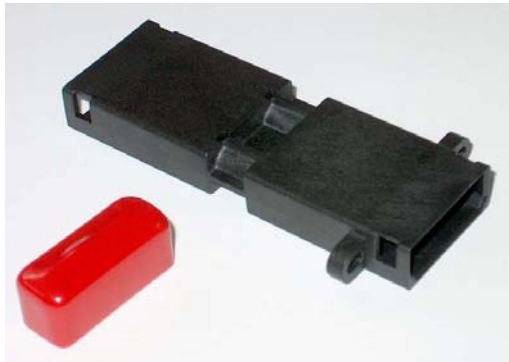
Recommended Panel Cutout  
Size:  
1.28 (32.4mm) by 0.5  
(12.7mm)

Snap-In  
ESCON to ST Adapter

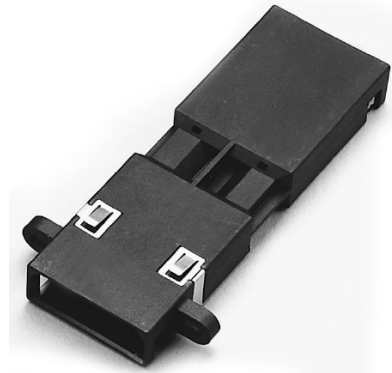


**Samples:**

A-ESCON-02-01-MM



A-ESCON-02-02-MM



A-ESCON-ST/PC-01-01

