

# LC adapters

## Description:

The innovative LC design offers a SFF - small form factor one-half the size of current industry standards, and simple features create a new definition of user-friendliness.

The LC meet EIA/TIA 568A, FOCIS 10 and IEC 11801 specifications for optical performance and intermateability. The LC Duplex fits into the SC standard cutout.

Two different versions are available:

- Duplex adapters
- Quadruple adapters



## Features:

- SFF – small form factor
- Duplex fits SC footprint
- Increases panel density
- Duplex or quadruple design
- Adapter with shutter available

## Application:

- Telecom
- LAN, WAN
- CATV
- Sensor systems
- Measuring Technique
- Utilities
- Railways

## Ordering code:

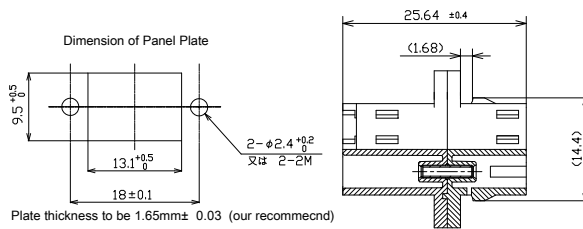
**A - LC (-D) / (A)PC - XX - XX XX**

<b>type</b> LC -D duplex LC -Q quadruple	<b>sleeve</b> 01 zirconia 02 phosphor bronze	<b>body</b> 01(S <sup>1</sup> ) SC footprint with flange, metal clip 05(S <sup>1</sup> ) SC footprint without flange, metal clip 03 SC footprint with flange, plastic clip 04 SC footprint without flange, plastic clip  BL blue (SM) GR green (SM-APC) BG beige (MM)
--	--	---

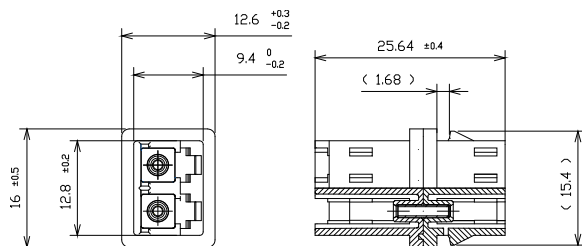
Note: 1) with shutter: **S** outer shutter  
**SI** inner shutter

LC® is trademark of Lucent Technologies, Inc.

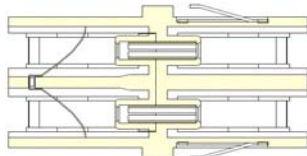
### Dimensions:



A-LC-D/(A)PC-XX-03 XX



A-LC-D/(A)PC-XX-04 XX



LC duplex adapter with inner shutter  
schematical view

A-LC-D/(A)PC-XX-05SI XX

### Samples of Adapters



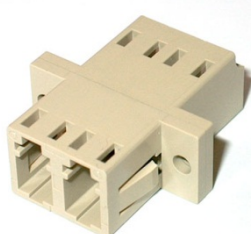
A-LC-D/PC-01-04-BL



A-LC-D/APC-01-05-GR



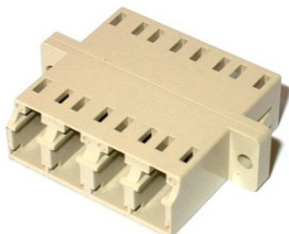
A-LC-D/PC-01-05-BL



A-LC-D/PC-02-03-BG



A-LC-D/PC-01-01-BL



A-LC-Q/PC-02-03-BG



A-LC-D/PC-01-05S-BL