

# FC adapters

## Description:

The FC adapters are designed and manufactured according JIS, IEC, EIA/TIA and ANSI specifications for intermateability and optical performance. The FC adapters are offered in MM or SM performances, for connectors with PC and APC polishing method. It is possible to exactly specify your demands concerning keying slot width (standard Seiko Instruments or Seikoh Giken) for APC adapters, type of sleeve (phosphor bronze or zirconia) and adapter performance: various shape of flange, D-hole, DD-hole, etc.



## Features:

- Precision sleeve
- Screw-type locking
- Excellent detachability
- Low insertion loss
- Material metal
- High life time – more than 1000 mating cycles

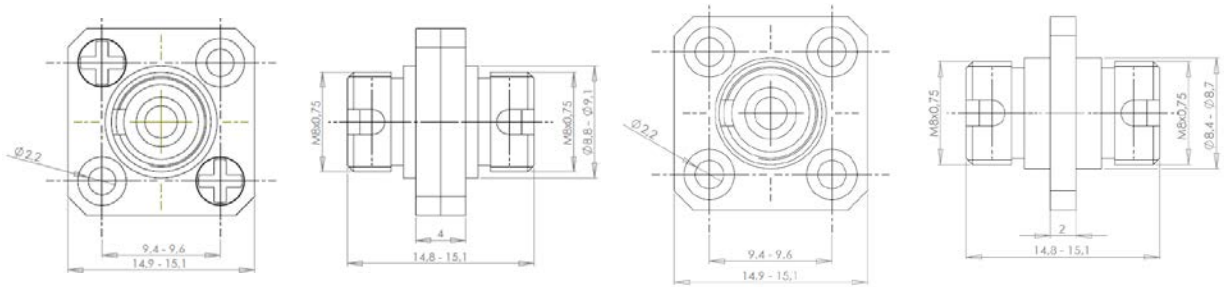
## Application:

- PC standard
  - APC standard: "wide key", "NTT" or "type N" "reduced" or "type R"
- keying slot width 240:  $\geq 2.15$  mm  
 - keying slot width 215: 2.15-2.20 mm  
 - keying slot width 205: 2.03-2.08 mm

## Ordering code:

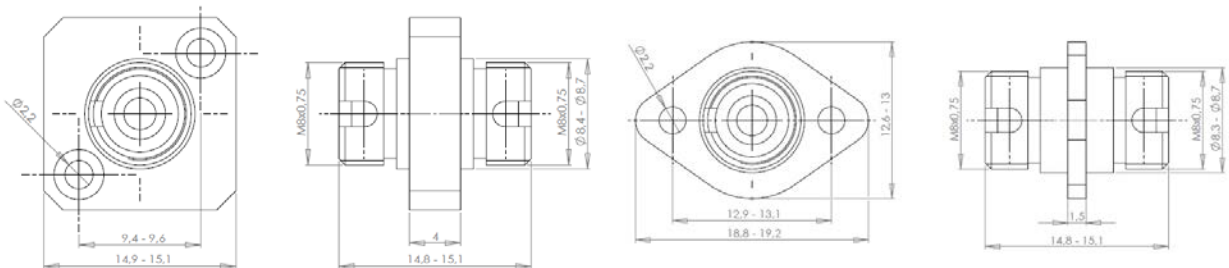
A - FC / APC - XX - 205 - XX		
		215
A - FC / PC - XX - 240 - XX		
<b>Polishing Method</b>	<b>Width of Slots:</b>	<b>Type of Flange:</b>
<b>Alignment Sleeve:</b>	205 2.03-2.08	square flange 15x15 mm
01 Zirconia	215 2.15-2.20	02 flange thickness 4.03 mm
02 Phosphor Bronze	240 $\geq 2.15$ mm	assembled from two parts
		07 flange thickness 2.03 mm
		08 flange thickness 4.03 mm
		circular flange, thickness 1.5 mm
		11 D hole $\varnothing$ 11 mm
		12 DD hole $\varnothing$ 11 mm
		04 D hole $\varnothing$ 14 mm
		05 DD hole $\varnothing$ 14 mm
		oval flange 19x13mm
		13 flange thickness 1.5 mm

Dimensions:



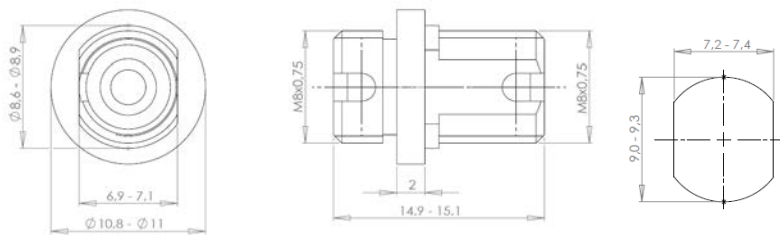
A-FC/(A) PC-XX-XXX-02

A-FC/(A)PC-XX-XXX-07



A-FC/(A)PC-XX-XXX-08

A-FC/(A)PC-XX-XXX-13



A-FC/(A)PC-XX-XXX-12

Recommended panel cut out