

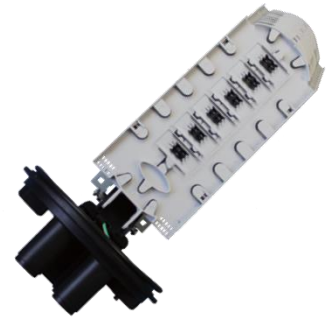
KSHT-222R

Fiber Optic Splice Closure (Ribbon)



Features

- May be used for cut, uncut and taut sheath applications
- May be used for all fiber optic cable
- Sheath retention & central strength member fasten system included
- Ribbed closure construction and lightweight plastic provides strength
- Resistance to chemical and UV attack
- Installation and reentry with a minimum of tools
- Re-enterable and reusable
- All hardware are included
- Protection class: IP 68
- RoHS compliance



Application

Underground, Aerial, Vault, Pole Mounting and Wall Mounting

Specifications

Model No	Size (mm) Height x Diameter	Spliced fiber storage capacity	Cable ports	Max.diameter of cable (mm)	Splice Trays
KSHT-222R	566 x 285	1728F (Ribbon fiber)	1 oval port + 6 rounds ports	2 oval port for 1 cable with max 30 mm. 6 rounds port , each port for 1 cable with max 30 mm.	Tray 222R Capacity: 144 splices

Ordering code:

KSHT-222R - **X** - **X**

Numbers of Trays	Numbers of Fibers
1 - 12	1 - 1728