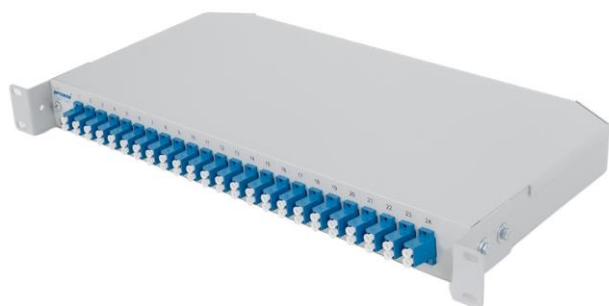


ZMPJ

Rack mount fixed cabinet

Description:

The **ZMPJ** Fixed Cabinet introduces a compact, low cost solution for fiber optic cable termination. The **ZMPJ** series is ideal for rack-mounting in confined areas such as equipment enclosures where rack space is limited. The modular system allows splicing and termination up to 96 fibers in rack height 1U. The **ZMPJ** cabinet is produced from Aluminium alloy 5754 material. Benefits are excellent corrosion resistance and very high strength.



ZMPJ-1 1U base unit
with FM-24 DLC front panel

Features:

- FTTH use - holder for microtubes included
- Designed for microtubes termination
- Fixed shelf
- Changeable front panel, various coupling adaptors
- Coupling adapters mounted on the face panel
- Accommodates up to 96 fibers in 1 rack unit
- Removable top cover provides unrestricted access
- Cable strain-relief and grounding provisions
- Accepts the industry's most common connector types
- Durable powder coat finish light grey colour (RAL 7038, RAL 9006)
- Aluminium alloy 5754 material (Low weight, excellent corrosion resistance and very high strength)

Technical specifications:

PART NUMBER	FIBER CAPACITY ¹		RACK UNITS	DIMENSIONS (HxWxD) mm	SHIP WGT (kg)
	FM-12-XX	FM-24-XX			
ZMPJ-1	12 (24)	24 (48, 96)	1	44 x 432 x 253 ²	1.4

Note: 1) Fiber capacity is valid for standard connector types

2) Depth dimension with unit holders

Coupling panels FM series available for the common used connector adapter types in following configuration:

FM-12-XX 12 pcs ST, FC, SC, DSC, DLC, QLC, E2000, ... adapters
 FM-24-XX 24 pcs ST, SC, DSC, DLC, QLC, E2000, ... adapters

Applications:

- Rack-mount
- FTTH networks
- Customer premise remote cable drop

Product information and specifications:



ZMPJ-1
The cabinet without adapters



Front panel FM-24-SC (DLC)

Standard front panels

FM-12-DSC	12x duplex SC (QLC) adaptors
FM-24-DSC	24x duplex SC (QLC) adaptors
FM-12-SC (DLC)	12x single SC (DLC) adaptors
FM-12-ST (FC)	12x single ST (FC) adaptors
FM-24-ST (FC)	24x single ST (FC) adaptors
FM-24-SC (DLC)	24x single SC (DLC) adaptors

Ordering Code:

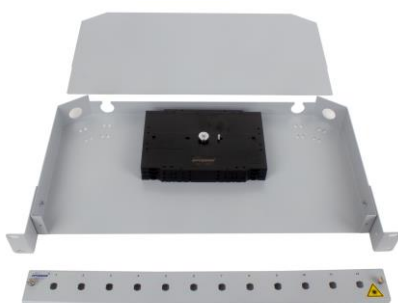
ZMPJ-X	-	XX	-	XX(F)¹ X	-	CX	(/xPG²)
Version Rack Unit 1 1U		Fiber Capacity 12 ÷ 96 Fibers		Coupling Type ST ST SC(F) SC FC FC E2(F) LSH (E2000) MJ MT-RJ DSC(F) Duplex SC DE2(F) Duplex E2000 DLC(F) Duplex LC QLC(F) Quadruplex LC Application M Multimode S Singlemode A APC		Splice Trays X: 0 ÷ 4	

Note:

- 1) **F** - Adaptors fixed by screws
- 2) **xPG** - Option for cable glands PG 13.5 (**x** = 1 - 4 pieces)



Plastic cable gland PG 13.5



Base unit with front panel, top cover and splice trays



Back view of ZMPJ-1