



## iMux4A-100

Ethernet to 4E1 Multiplexer

## iMux8A-100

Ethernet to 8E1 Multiplexer

The iMux4A/iMux8A is an E1 inverse multiplexers capable of bundling up to 4E1/8E1 lines for cost-effective connection of 10/100Base-TX or 100Base-FX LANs over multiple E1 transports. The iMux4A/iMux8A inverse multiplexer transmits up to a 9.92Mbps/15.87Mbps Ethernet bridge channel (GFP-F encapsulated) over 4E1/8E1 links. The iMux4A/iMux8A bridges the gap between E1 and E3, allowing bridges to operate at faster rates. It also provides high speed access to SDH/SONET backbones where the only access services available are E1 lines. The iMux4A/iMux8A supports an E1 attenuation of up to 43 dB on twisted pair or coax cable. This provides an approximate operating range up to 2km (using 22AWG). The iMux4A/iMux8A fully meets E1 specifications including ITU-T G.703 and G.823. The iMux4A/iMux8A features diagnostic capabilities for performing remote loopback. The operator at either end of the line may test both the iMux4A/iMux8A and the line in the digital loopback mode. The Ethernet copper interface supports auto-negotiation and auto MDI/MDIX, allowing plug-and-play Ethernet connection without any additional configuration.

### Features

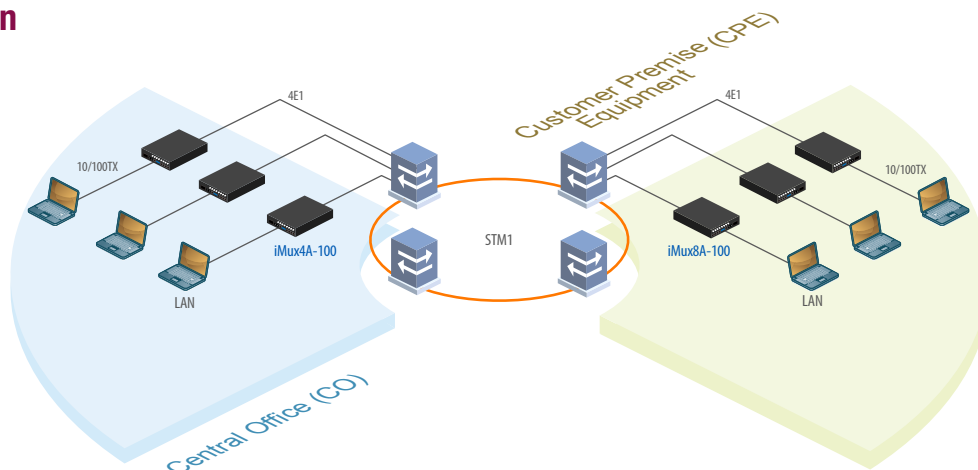
- Connects one Fast Ethernet over 1-4 E1 links (1.984 ~ 9.92Mbps) (iMux4A-100)
- Connects one Fast Ethernet over 1-8 E1 links (1.984 ~ 15.87Mbps) (iMux8A-100)
- Built-in GFP bridge operates at WAN rate
- Auto-Negotiation
- Unbalanced E1/BNC or balanced E1/RJ45
- LED Alarm indication
- Supports RS232 console management

### Specifications

E1 Interface	Framing	CCS+CRC (requires Unframed)
	Standard	ITU-T G.703/G.704/G.706 & G.732, G.823
	Bit rate	2.048Mbps± 50ppm (up to 4E1/8E1)
	Line code	HDB3
	Clock setting	Internal OSC or recovery clock
	Receive level	-43dB
	Line impedance	75 ohm (BNC) / 120 ohm (RJ45)
	Jitter Performance	Complies with ITU-T G.823
	Pulse Mask	Complies with ITU-T G.703
	Pulse amplitude	Nominal 2.37V ± 10%
	Delay Variance	220ms
	Connector	RJ45, BNC
	Diagnostics	Digital remote loopback

<b>Ethernet Interface</b>	Standards	IEEE 802.3, 802.3u
	Data rate	10/100Base-TX, Half/Full duplex
<b>Ethernet Interface</b>	Connector	RJ45 10/100Base-TX
<b>Indications</b>	Power, ALM, E1 signal loss, E1 Alarm (AIS, LOF, RAI, LOMF), LAN link /ACT, 10/100M, SD (100Base-FX)	
<b>Power Input</b>	AC	100~240VAC, DC 18~60VDC
<b>Power Consumption</b>		< 6W
<b>Dimensions</b>		210 x 128.8 x 43.8mm (D x W x H) (iMux04A)
<b>Temperature</b>		0 ~ 50°C (Operating), -10 ~ 70°C (Storage)
<b>Humidity</b>		10 ~ 90% RH (non-condensing)
<b>Certifications</b>		CE, FCC, RoHS Compliant
<b>MTBF</b>		75,000 hrs

### Application



### Ordering Information

Model Name	Description
iMux4A-100AD	10/100Base-TX to 4 E1 RJ45 +BNC mux with built-in AC+DC Power
iMux4R-100AD	10/100Base-TX to 4 E1 RJ45 mux with built-in AC+DC Power
iMux4B-100AD	10/100Base-TX to 4 E1 BNC mux with built-in AC+DC Power
iMux8A-100AD	10/100Base-TX to 8 E1 RJ45 +BNC mux with built-in AC+DC Power
iMux8R-100AD	10/100Base-TX to 8 E1 RJ45 mux with built-in AC+DC Power
iMux8B-100AD	10/100Base-TX to 8 E1 BNC mux with built-in AC+DC Power