

## CS Patchcord

### Description:

#### PRELIMINARY DATASHEET

The CS<sup>®</sup> connector was introduced as a replacement to current duplex LC connectors which are too big for newer generation transceiver interfaces and to increase the connector density in patch panels. The CS<sup>®</sup> connector is operated with a push-pull mechanism having two cylindrical, spring-loaded 1.25 mm ferrules, within a single housing. The CS<sup>®</sup> connector's two ferrules are pitched at 3.8 mm apart, which is the minimum possible spacing to meet today's TOSA and ROSA optics requirement. The CS<sup>®</sup> connector can be used with either 2 mm or 3 mm jacketed cable.

CS<sup>®</sup> Connector Designed for next generation 200/400G transceiver QSFP-DD and OSFP



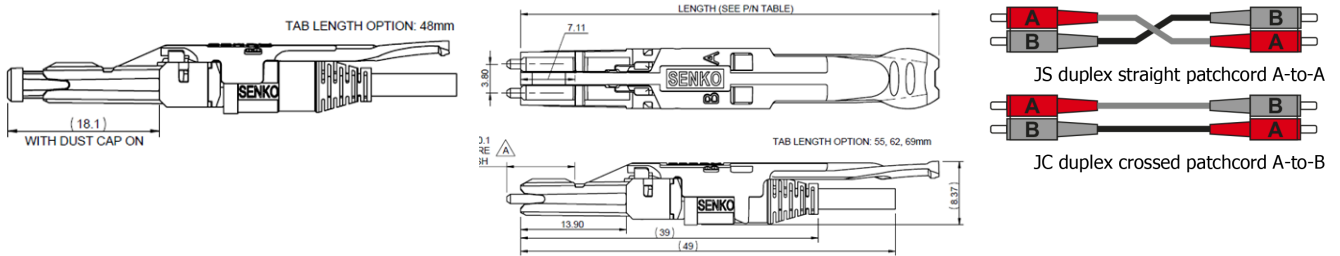
### Features:

- 40% size reduction compared to LC Duplex
- Connector adopted by QSFP-DD, OSFP and COBO
- Performance exceeds LC
- Push/Pull tab for a better usability in high density applications
- for a better usability in high density applications
- Double the density in patch panel compared to LC
- IEC random mating Grade B

### Specifications:

	MM PC	SM Ultra PC Grade B	SM Ultra PC Grade A
Insertion loss (IL) (IEC 61300-3-4)	0.25 dB typ 0.50 dB 97%	0.12 dB typ 0.30 dB 97%	0.06 dB typ 0.15 dB 97%
Return loss (RL1) (IEC 61300-3-6)	>35 dB	>55 dB	>55 dB
Housing color	Aqua	Blue	Blue
Boot color	White	White	White
Tab color	White		
Assembly procedure	glue and polish		
Connection	physical contact		
Lock mechanism	push-pull tab		
Standards	IEC/EN		

Ferrule material	full ceramic zirconia 1.25 mm
Connector material	thermoplastic
Adapter material	polymer composite, zirconia sleeve



### Adaptors:

#### Single channel (2F)



#### Dual channel (4F)



#### Triple channel (6F)



#### Quad channel (8F)

### Recommended panel cut-out, panel thickness 1.7 mm max

A-CS2/PC-01-05-BL w/o flange

A-CS4/PC-01-05-BL w/o flange

A-CS6/PC-01-05-BL w/o flange

A-CS8/PC-01-05-BL w/o flange

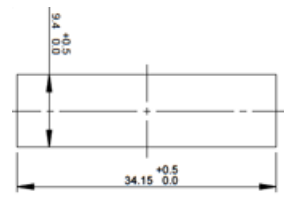
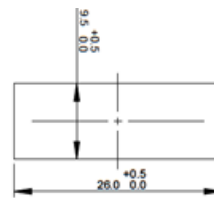
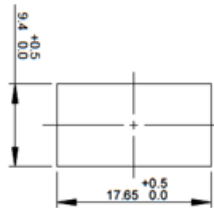
A-CS2/PC-01-01-BL with flange

A-CS4/PC-01-01-BL with flange

A-CS6/PC-01-01-BL with flange

A-CS8/PC-01-01-BL with flange

Note: 1) adaptor aqua color: ...-AQ



### Patchcord samples:



UCS48-R2 S7A-JC-003



UCS48-ULCDF-R2 S7A-JC-003



Duplex LC Uniboot with Flip

## Application:

- Next generation Telecom & LAN, WAN



## Ordering code:

AAAXX		- XX XXX	- XX	- XXX										
<b>AAA - Connector</b> <table border="1"> <thead> <tr> <th>Type</th> <th>Description</th> </tr> </thead> <tbody> <tr> <td><b>CS</b></td> <td>Duplex CS/PC multimode</td> </tr> <tr> <td><b>UCS</b></td> <td>Duplex CS/UPC, Grade B</td> </tr> <tr> <td><b>UCS1</b></td> <td>Duplex CS/UPC, Grade A</td> </tr> <tr> <td><b>ULCDF</b></td> <td>Duplex LC Uniboot with Flip</td> </tr> </tbody> </table>		Type	Description	<b>CS</b>	Duplex CS/PC multimode	<b>UCS</b>	Duplex CS/UPC, Grade B	<b>UCS1</b>	Duplex CS/UPC, Grade A	<b>ULCDF</b>	Duplex LC Uniboot with Flip			<b>XXX - length [m]</b>
Type	Description													
<b>CS</b>	Duplex CS/PC multimode													
<b>UCS</b>	Duplex CS/UPC, Grade B													
<b>UCS1</b>	Duplex CS/UPC, Grade A													
<b>ULCDF</b>	Duplex LC Uniboot with Flip													
<b>XX</b> Push-pull tab length <b>36</b> 36 mm (09 fiber type) <b>55</b> 55 mm (R2, R3 cable type) <i>On request:</i> 48, 62, 69 mm		<b>X - type (pigtail or jumper)</b> <b>JC</b> jumper A-B crossed <b>JS</b> jumper A-A straight <b>PT</b> pigtail tight buffered, strip in one shot < 10 cm <b>PS</b> semitight 20-30 cm in one shot <b>PD</b> pigtail easy strip > 100 cm												
		<b>XX - diameter of fiber, cable</b> fiber <b>09</b> fiber Ø 0.9 mm duplex cable <b>R2</b> Ø 2 mm round cable <b>R3</b> Ø 3 mm round cable		<b>XXX - type of fiber</b> <b>OM1</b> MM 62.5/125 µm <b>OM2-5</b> MM 50/125 µm <b>S2D</b> SM 9/125 µm (G.652D) <b>S7X</b> SM 9/125 µm (G.657X)										